

**CORRIGENDUM-I**

**COMPLIANCES TO THE CLARIFICATIONS SOUGHT BY THE PARTICIPATING BIDDERS ON 29-10-10 for the Tender Notice-27/10-11 & T.S -33,34 & 35/10-11for Package-I, II & III respectively**

**COMPLIANCES TO THE TECHNICAL CLARIFICATIONS SOUGHT BY THE PARTICIPATING BIDDERS ON 29-10-10**

Sl. No.	Clarifications sought by the Prospective Bidders	Compliance to the Clarifications by OPTCL
1	Annexure-II, Price Schedule of 40MVA, 132/33kV Tr. Bay at Budhipadar, item No. 23---"quote the price for '33kV Cable (single core)'--- Exact cross sectional area of 33kV (single core ) is required.	The Cable sizes shall be Single Core-1000 Sq. mm XLPE Power cable for each phase with one No. Single Core-1000 Sq. mm XLPE Power cable as spare cable.
2	Annexure-II, Price Schedule of 40MVA, 132/33kV Tr. Bay at Budhipadar, item No. 24---"Voltage Grade & the Cross Sectional area & out door or indoor of cable end termination kit"	The Cable end termination kit shall be suitable for OUT DOOR- Single Core-1000 Sq. mm XLPE Power cable and the quantity shall be as per actual requirement.
3	GI Flat & Pipe Earthing for Budhipadar, Junagarh & Rajgangpur in price schedules :- In supply part i.e. in annexure-II required quantity is mentioned. Again in the erection part i.e. in annexure-III both supply & erection are mentioned. Whether to quote for supply & erection or only erection to be clarified.	Bidders are requested to quote the rates for supply of G.I. Flats & Pipe earthing in Annexure-II of Price Schedule & Rates for erection, only, of G.I. Flats & Pipe earthing in Annexure-III of Price Schedule.
4	(a) Control cable of different sizes at Budhipadar, Junagarh & Rajgangpur in price schedule :- The cross sectional area is not mentioned, the quantity is also not mentioned. Please clarify. (b) Annexure-II of Price Schedules-- asked to quote for different sizes of control cables like-- 3C, 5C, 7C, 10C, 16C & 19C control cables. (i) Cross sectional area of all above type cables are required. (ii) Specific quantity of each type of control cable is required.	(a) the cross sectional area of all type of control cables required against the packages are of 2.5 Sq. mm. (b) Firms are requested to ascertain the quantities of each type of Control Cable from the enclosed (along with this corrigendum) single line diagram for the Bay extension at each S/S.

5	<p>(a) Since in the tender document switchyard layout &amp; single line diagram not enclosed, we would request you to provide the same.</p> <p>(b) Since in the tender document control room distance from transformer extension bay is not given, we would like to request you to provide the same. Sub-station.</p> <p>(c) <b>In E1- General Clause (Page No. 6 of 16) Cl. No. 3, Vol-II :-</b> It is mentioned that drawings are attached with tender document, whereas no drawings are found in the tender document, please provide us the drawings.</p>	<p>The Single Line Diagram with the identification of the proposed Bay is enclosed herewith as <b>Annexure-I</b> However, the bidders are advised to visit the site to ascertain the exact orientation of the bay &amp; the quantity &amp; type of Control cables etc for quoting the rates against the items.</p>
6	<p>Annexure-II, Price Schedule of 40MVA, 220/33kV Tr. Bay at Dubri(Old), item No. 25(c)---"quote the price for 1CX500Sq.mm 33kV Grade XLPE Cable" -- Requirement</p> <p>(a) Whether 33kV earth system or unearth system.</p> <p>(b) whether copper tap screening is required or not. If copper tap screening is not required then inner sheath is required or not.</p>	<p>(a) the system neutral is solidly earthed.</p> <p>(b) Copper tap screening is required.</p> <p>(c) The Cable sizes shall be Single Core-1000 Sq. mm XLPE Power cable for each phase with one No. Single Core-1000 Sq. mm XLPE Power cable as spare cable instead of specified 1CX500Sq. mm. 33kV Grade XLPE Cable .</p>
7	<p>(a) Mandatory Spare part list for the substation equipments not provided in the tender document</p> <p>(b) The Bidding Document / Clause 18.1, Page No. 44 of 131 :- The specification says that spare parts, the same are included in the accompanying technical specification but in the tender document mandatory spare list are not provided, kindly clarify if the same is required then we would like to request you to provided the same.</p>	<p>Not required for the 3<sup>rd</sup> bay extension works</p>

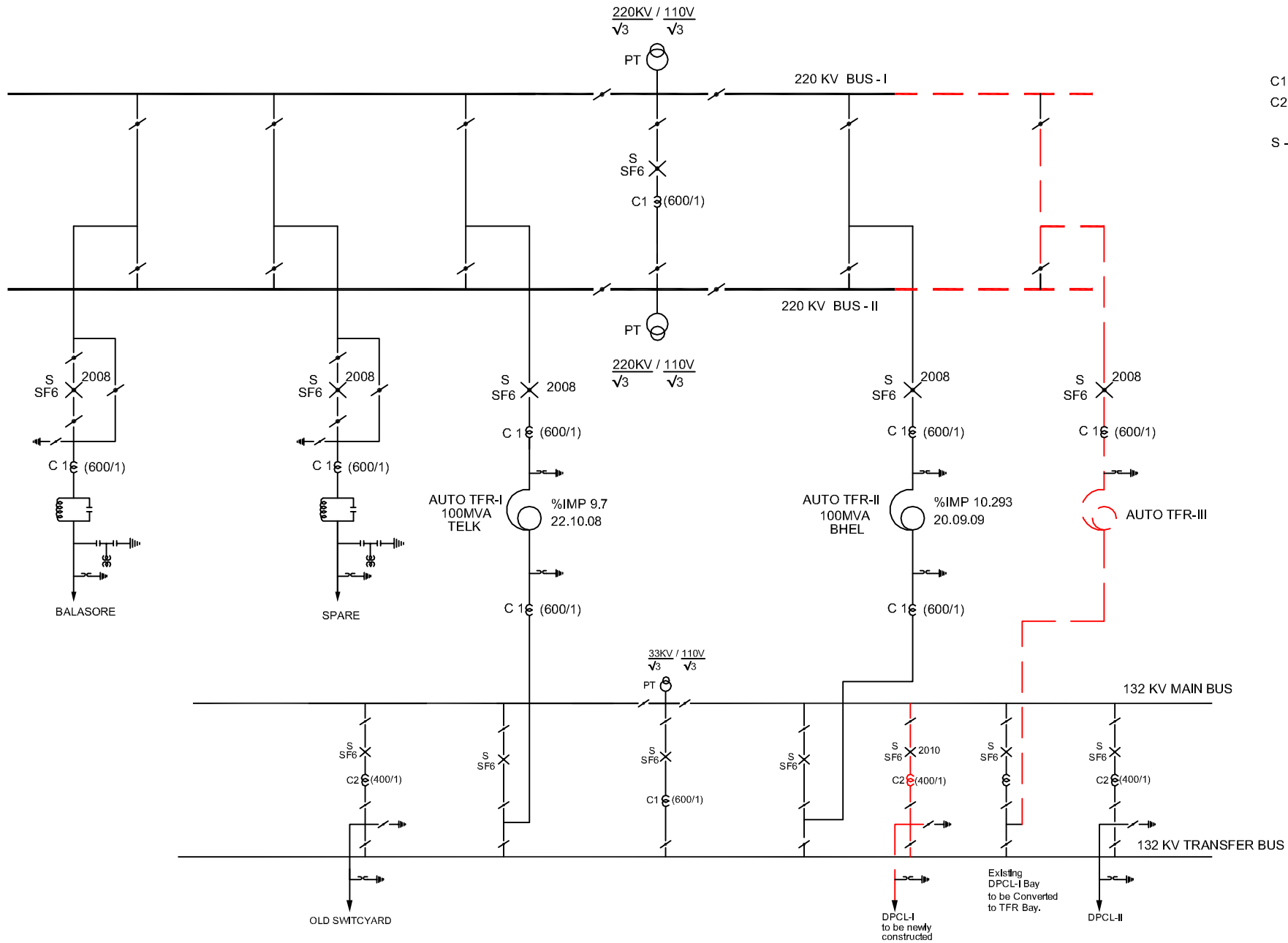
8	<p><b>General Equipment &amp; SS Accessories Clause No. 10.02, Page No. 11 of 29 :-</b> Since the specification say all the cables pass fire resistance test means cable shall be FRLS or not, kindly clarify if the same.</p>	Cables shall be FRLS
9	<p>(a) In Junagarh Annexure-III of price schedule serial No. 24:- the length of dismantling of old boundary wall is not mentioned. To Clarify (b) Please furnish the boundary wall dismantling details (Meters) in the price schedule (Civil and Erection) for the Sub-stations at Junagarh.</p>	The Bidders are requested to quote for <b>80 mtrs</b> against dismantling of old boundary wall for Junagarh Annexure-III of price schedule serial No. 24 instead of Quoting in Lot as per price schedule.
10	<p><b>In E1-16-COND, E/W, INSULATORS- Page 38 of 95 point 3.2.1, Vol-II :-</b> It is mentioned that list of specification drawings for specification drawings for disc. Insulators is given at Annexure –I, II whereas Annexure – I, II is not available.</p>	<p>(a) The Insulators shall be Normal (Fog) type. (b)The bidders are requested to quote rates for the disc insulators as per the technical specification furnished at 3.1.4 &amp; the technical specification as mentioned there in for the Insulators. Accordingly, the drawings may be provided for scrutiny at this end.</p>

11	<p>(a) <b>Vendor List:</b> Vendor list for supply of major equipments is not available with the tender documents.</p> <p>(b) Since the preferred switchyard equipment make list not provided along with tender document, we would like to request you to provide the same.</p> <p>(c) <b>Cl. No. (XI) under Sl. No. F of SCC, Page No. 13 of 132</b> :- It is mentioned that “successful bidders may procure tower structures for both Sub-station and line, preferably from the OPTCL empaneled Rate Contract Holders. In this context, please provide the list of OPTCL empaneled Rate Contract Holders.</p> <p>(d) <b>Special Condition of Contract / Clause No. XI, Page No. 13 of 131</b> :- Since the structure material Rate contractor list not provided in the tender document, we would like to request you to provide the same.</p>	<p>(a) The Vendor List is enclosed along with this corrigendum. Bidders are requested to strictly adhere to the vendor list enclosed. <b><u>ANNEXURE-II</u></b></p> <p>(b) The list of the empaneled Rate contract holder for the tower structures supply are :: Utkal Galvnizer Limited, Bhubaneswar// IRVCL Infrastructure &amp; Projects Ltd Nagpur// Unique Structures &amp; Towers Ltd. Bhubaneswar// Techno-Engineering &amp; Co. Ltd., New-Delhi// Unistar Galvanizers &amp; Fabricators (P) Ltd. Jamshedpur// New Modern Techno Mech Pvt. Ltd, Baripada.</p>
12	<p><b>E-12-CURRENT TRANSFORMER- Page-14 of 42, Vol-II</b> :- It is mentioned that terminal Connectors should be suitable for 33 KV, 132KV, 220 KV C.T. – ACSR Moose Conductor. But in the Price Schedule of (Volume –III) the bus bar of:</p> <p>(i) Duburi Sub-station-both 220 KV &amp; 33 KV side bus is of twin zebra.</p> <p>(ii) Kamakhya Nagar Sub-station-132 KV side is panther conductor, 33 KV side is zebra conductor.</p> <p>(iii) Kalarangi Sub-station-132 KV &amp; 33 KV side is zebra conductor.</p>	<p>The bidders are to visit the sites and specify according to the site condition to match with the existing system in line with the Price shedule.</p>
13	<p>Whether Control Voltage requirement of CRP is of “ 220V DC”</p>	<p>OPTCL adopted DC System is 220V</p>

14	At Karanjia Sub-station Whether Station Transformer shall be erected on the "Bed" or " Double Pole Structure".	Station Transformer is to be plinth mounted
15	Annexure-II of Price Schedule in all Packages (a) Electro-Mechanical Strength of insulators not mentioned. (b) Tension & Suspension Insulator String for Bus -Bar to be presumed as Single Tension & Suspension string	(a) Refer T.S. 3.1.4 of Insulators -E-16 for elector- mechanical strength of the insulators. (b) The insulator strings shall be decided as per the site conditions and the bus-bar arrangements.
16	Annexure-II of Price Schedule in all Packages (a) CT Ratios are not mentioned. (b) NCT Technical Specification are not mentioned.	(a) The CT Ratios should be as follows: (I) for 220kV 160 MVA----1200-600-300/1-1-1-1A (ii) for 132kV- 40/20MVA- 400-200-100/1-1-1-1A (iii) for 33kV----- 800-400-200/1-1-1A (b) The Voltage Class of the NCT shall be <b>System voltage/Sqrt(3)</b> for the referred system voltage, with two nos. Secondary winding for protections only. All other technical characteristics shall be same as that of the referred voltage class Current Transformer.
17	Bus-Bar arrangement not mentioned	The bidder is requested to ascertain the Bus Bar arrangement from the enclosed Single Diagram & from the site as per the Cl. No.9.2 of INB of bidding documents to match with the existing system and also shall quote for all such additional items, at the Foot note of each price schedules, that are required to complete the Package.
18	Supply of non-specific equipment /services-(Page-138) E1 General Clause -Page-4 to 16- the schedule of such items is not furnished in the tender documents	Not required for the 3rd bay extension works
<b>COMPLIANCES TO THE COMMERCIAL CLARIFICATIONS SOUGHT BY THE PARTICIPATING BIDDERS ON 29-10-10</b>		

	<b>Clarifications sought by the Prospective Bidders</b>	<b>Compliance to the Clarifications by OPTCL</b>
1	<p><b>Cl. No. (C) of SCC at Page 11 of 132, Vol-I - 'Minimum Financial Qualifying Criterion'</b>In minimum financial qualifying criteria, <b>turnover</b> :- It is mentioned that, the contractor should have minimum average annual turn over of at least 75% of the tender projected cost of the project of the last three financial years. But in tender document the estimated/projected cost is not mentioned. Please clarify Therefore, we may request you, please clarify the above points, so that, we can proceed further in our tender preparation.</p>	<p>The Projected (Estimated) cost of the Packages put to the tender for the Grid S/S are:  (a) Package-I-----Rs. 6,68,71,700/-  (b) Package-II---- Rs. 4,39,62,000/-  (c) Package-III----Rs. 5,16,23,600/-</p>
2	<p><b>Cl. No. 26.3 of Submission of Bids, Instruction to Bidders (Section –INB) Vol –I</b> : It has been mentioned under this clause that 'Qualifying Data' in five copies to be submitted in a separate envelope. In this context, please refer the ' Check List for the Bidding Documents' (Page No. 3 of 131), wherein it is mentioned that “ Bidders are requested to ensure that all the documents as check listed below are enclosed as per the Sl. No. &amp; neatly pages marked” which includes 'Documents in support of Financial Qualifying Criteria' &amp; 'Documents in support of technical Qualify Criteria' as per Sl. No. 10 &amp; 11 of Check List. Please clarify whether the Qualifying Data as asked for are to be submitted along with the checklist ) Techno-commercial offer) or separately.</p>	<p>The Bidders may enclose the Qualifying data (in addition to the tender documents in complete shape) at the end of the tender document duly page mark continued &amp; specified in the check list.</p>

3	<p><b>Validity of EMD BG::</b> In the tender specification (INB) Page. No. 46, the validity of BG is specified as 10 months where as in the Annexure-I- BG format, the validity is mentioned as 240 days.</p>	<p>The validity period for the BG is 10 months (Annexure-I—CI-4 is to be corrected accordingly &amp; EMD BG submitted.) In addition to the information submitted for EMD BG, it should also be ensured that the followings have been complied in the EMD BG ::</p> <p>(a) The stamp paper for the EMD BG shall be purchased in the Name of the issuing Banker.</p> <p>(b) The EMD BG shall be accompanied with the confirmation letter from the issuing Banker.</p> <p>(c) Cl. No. 8 of the EMD BG for invokability of EMD BG at Bhubaneswar.</p> <p>(d) Signature of two Nos. witnesses in the EMD BG</p> <p>(e) Validity of the EMDBG for a period of Ten Months from the date of opening of the tender.</p>
4	<p>Clause No. iii of (F) SCC &amp; Clause NO. 15.1 of INB----- Inclusion of Service Tax &amp; Entry Tax</p>	<p>(a) OPTCL shall not be responsible for any tax related issues between the bidder &amp; his Sub-vendor.</p> <p>(b) Entry-Tax shall be reimbursed to the bidder provided the same has been paid by the bidder &amp; supported with the original documentary evidences.</p> <p>(c) Service Tax shall be paid on the civil and erection portion only and shall not be included in the prices to be quoted.</p>
5	<p>(A) THE BIDDERS ARE REQUESTED TO VISIT THE SITES AND ASCERTAIN THE ACTUAL REQUIREMENTS AS PER THE SITE CONDITION.</p> <p>(B) THE BIDDERS ARE REQUESTED TO QUOTE THE RATES FOR ANY NEW/ALTERNATIVES AT THE FOOT NOTE OF THE PRICE SCHEDULES AS PER THE SITE CONDITIONS/REQUIREMENTS WITH PROPER JUSTIFICATION.</p> <p>(C) BIDDERS SHOULD NOTE THAT THE BIDS SHALL BE EVALUATED ONLY AS PER THE ORIGINAL BOQ GIVEN IN THE TENDER SPECIFICATION.</p> <p><b>(D) THE ABOVE CORRIGENDUM SHALL ALSO BE SIGNED AND A COPY ENCLOSED ALONG WITH THE TENDER DOCUMENTS TO BE SUBMITTED DULY PAGE MARKED.</b></p>	



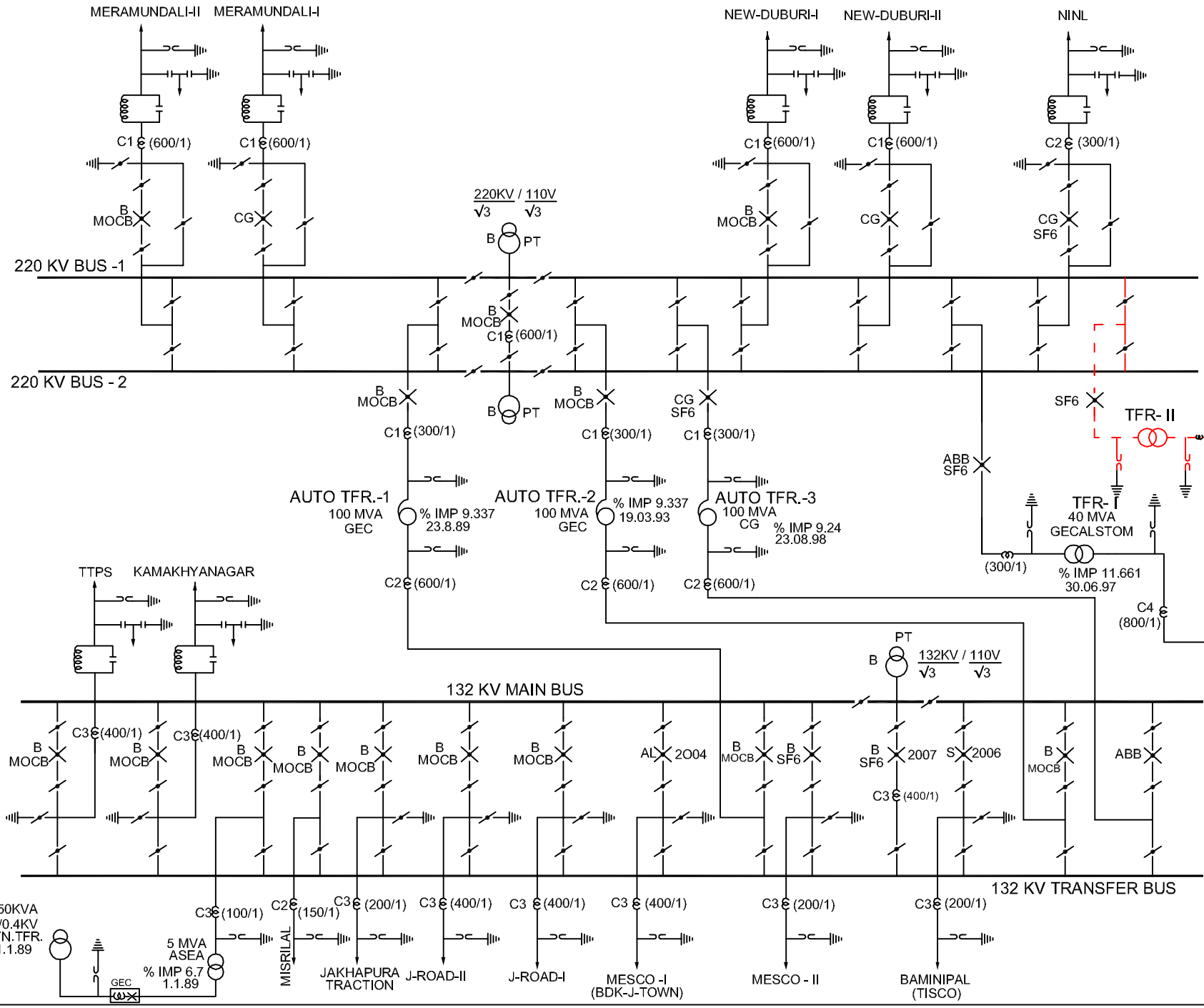
C1 - 600-300-150/1-1-11  
C2 - 400-200-100/1-1-11  
S - SEIMENS

Ph : ( 06784) 240269

220/132 KV S/S  
BHADRAK  
YOC - 2009



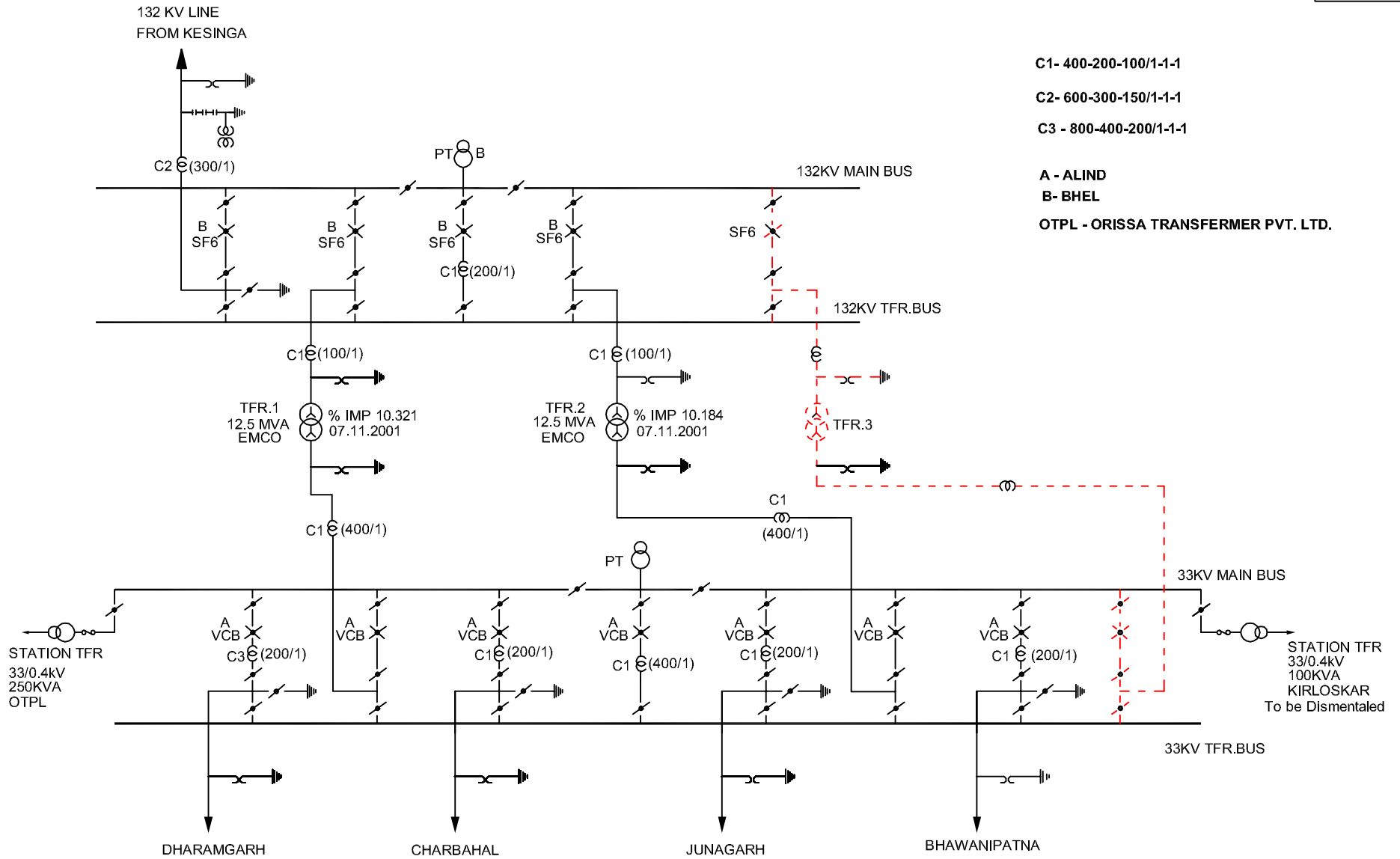




- C1 - 1200-600-300/1-1-1
- C2 - 600-300-150/1-1-1
- C3 - 400-200-100/1-1-1
- C4 - 800 - 400 - 200/1-1-1
- A - ALIND
- AL - ALSTOM
- ABB - ASEA BROWN BOVERY
- B - BHEL
- CG - CROMPTON GREAVES
- E - EASTERN SWITCH GEAR
- EL - ELPRO
- GEC - GENERAL ELECTRICAL COMPANY
- S-SIEMENS

Ph: 9238196144

**220/132/33KV S/S**  
**DUBURI**  
**YOC - 1989**



C1- 400-200-100/1-1-1

C2- 600-300-150/1-1-1

C3 - 800-400-200/1-1-1

A - ALIND

B- BHEL

OTPL - ORISSA TRANSFERMER PVT. LTD.

Ph: (06672) 243043

132/33 KV S/S  
JUNAGARH  
YOC - 2001

LINE CHARGED AT 33KV  
(FOR 33KV GODA FEEDER)

K.NAGAR-DUBURI 'T'

132 KV / 110 V  
 $\sqrt{3}$       $\sqrt{3}$   
B PT

C1 (200/1)

C1 (200/1)

132 KV MAIN BUS

132 KV TRANSFER BUS

TFR - 2  
12.5 MVA  
EMCO  
% IMP 9.31  
28.09.00

TFR - 1  
12.5 MVA  
NGEF  
% IMP 9.44  
19.05.04

- C1 - 200/100/1-1-1
- C2 - 400/100/1-1-1
- A - ALIND
- B - BHEL
- OTPL - ORISSA TRANSFORMER PVT. LTD.

33 KV MAIN BUS

33 KV TRANSFER BUS

TFR - 3

STN.TFR.  
250 KVA  
OTPL.  
25.1.98  
(to be sifted)

SPARE

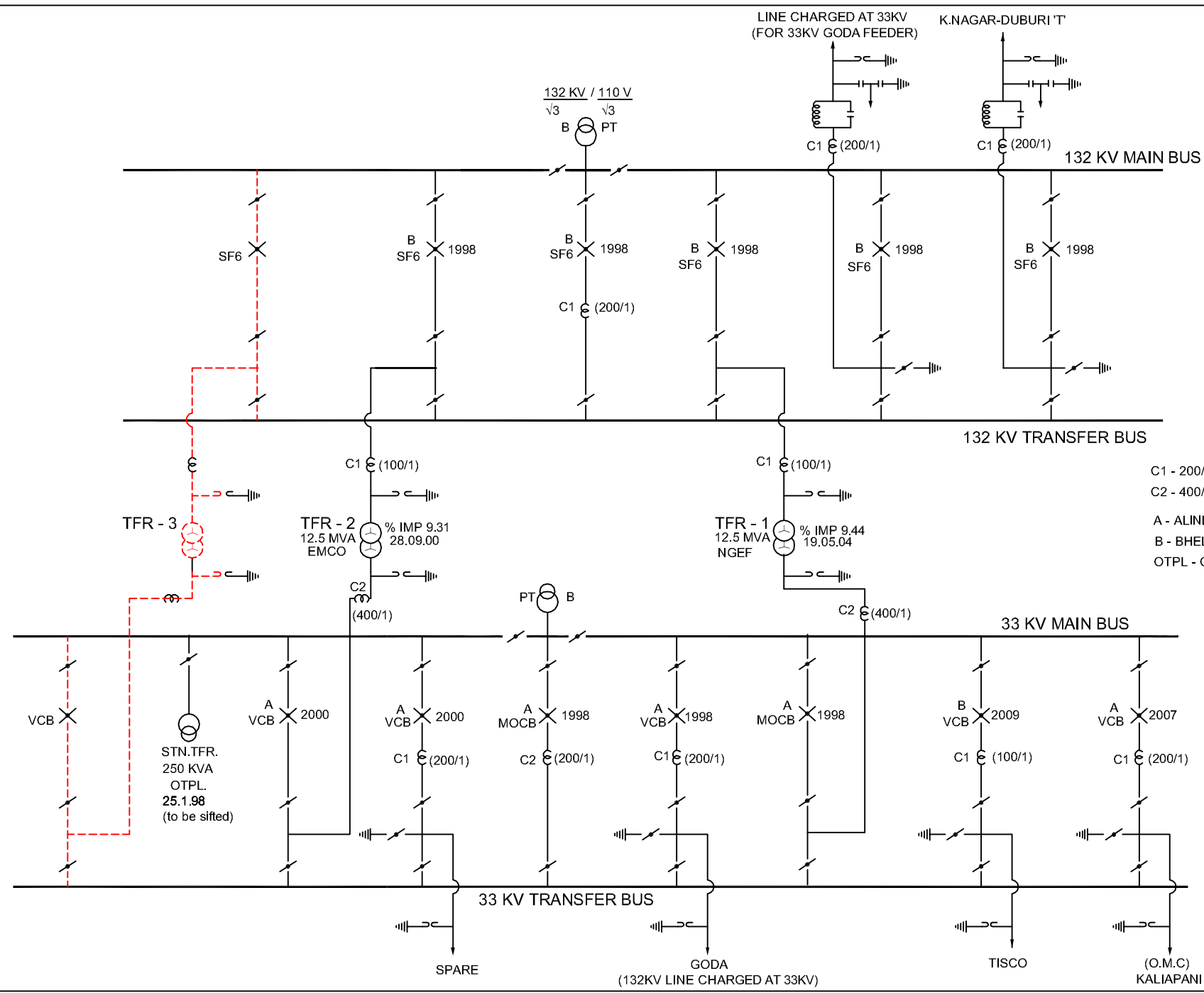
GODA  
(132KV LINE CHARGED AT 33KV)

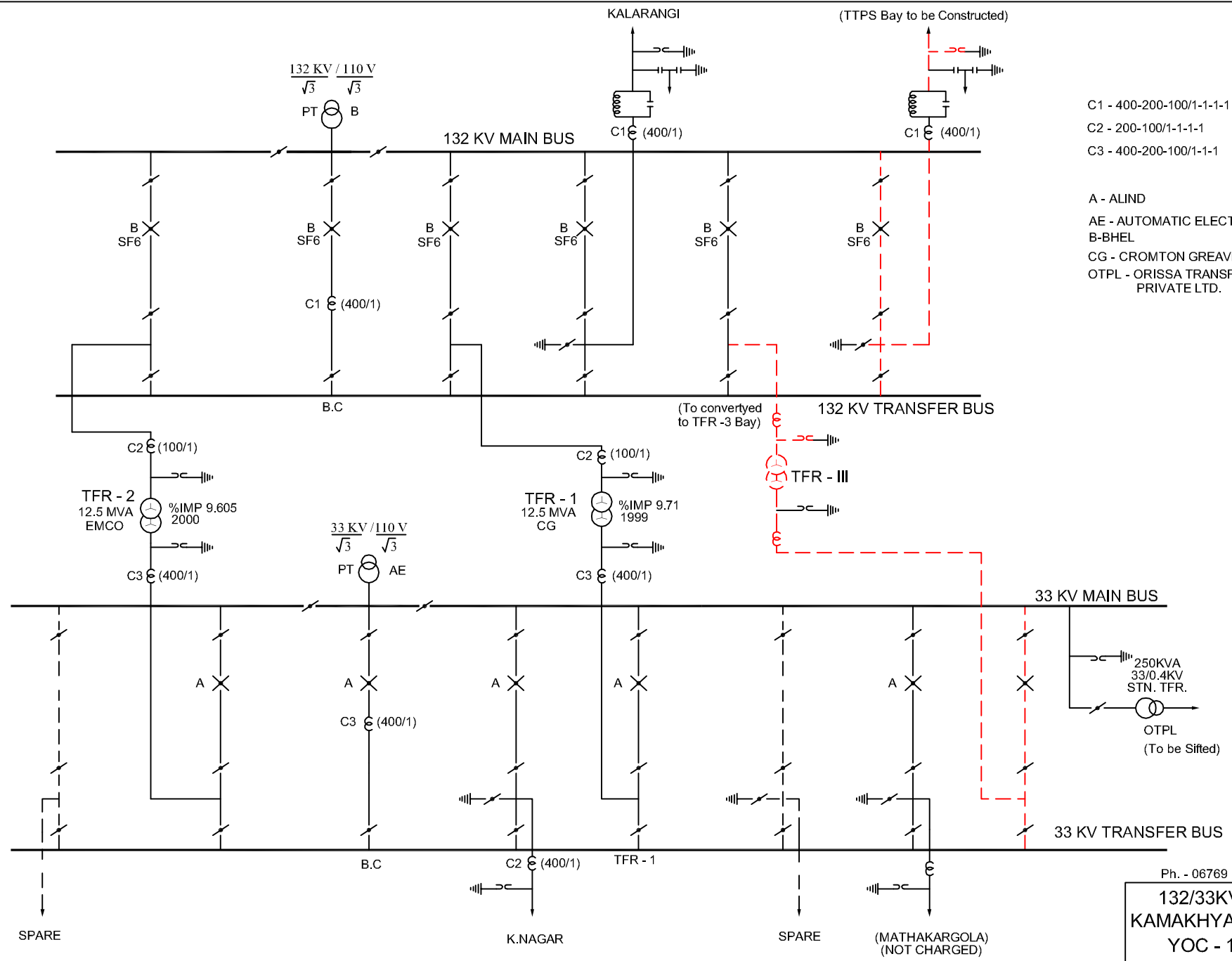
TISCO

(O.M.C)  
KALIAPANI

Ph. 9238196146

132/33KV S/S  
KALARANGI  
YOC - 1998



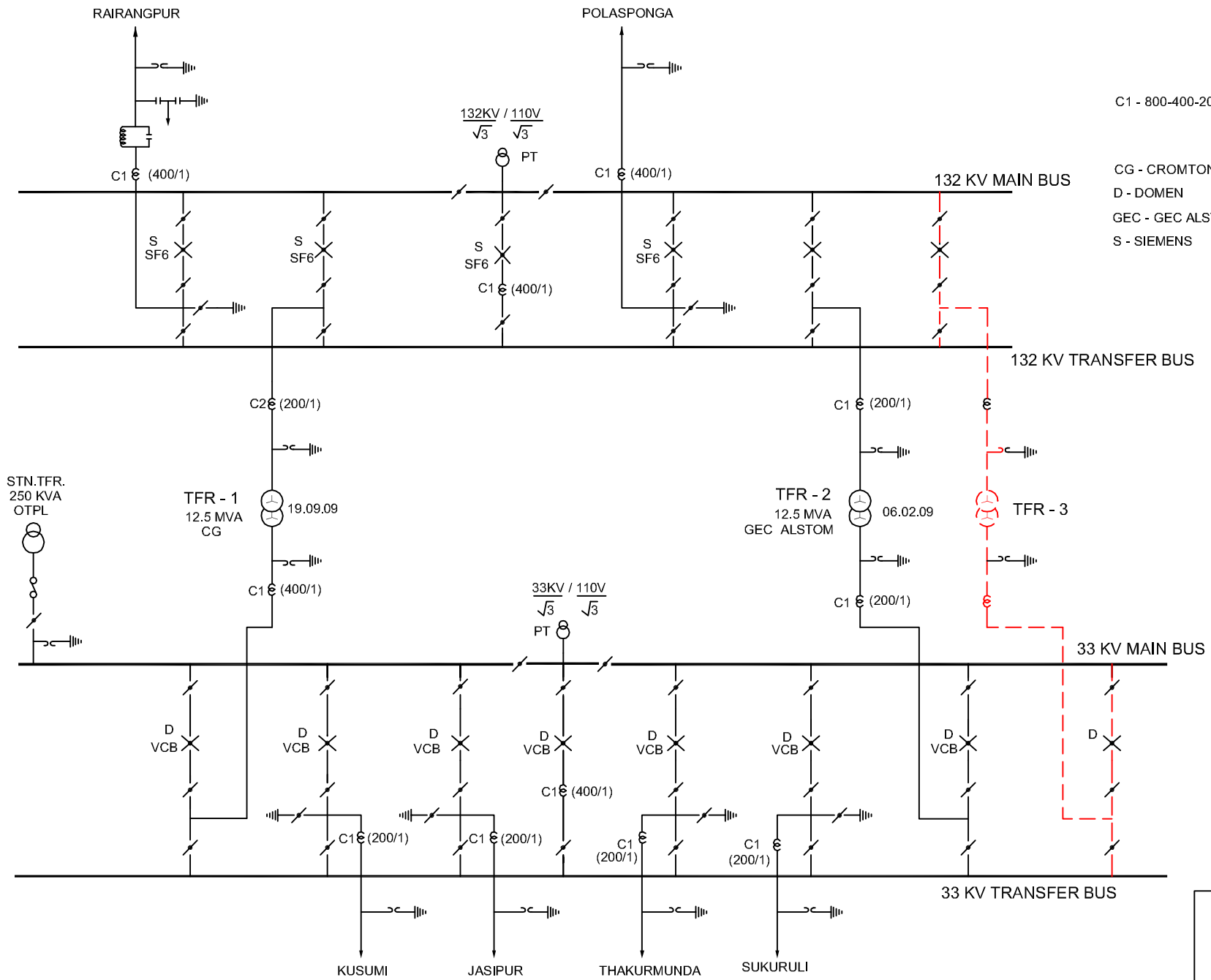


- C1 - 400-200-100/1-1-1-1
- C2 - 200-100/1-1-1-1
- C3 - 400-200-100/1-1-1-1

- A - ALIND
- AE - AUTOMATIC ELECTRIC
- B-BHEL
- CG - CROMTON GREAVES
- OTPL - ORISSA TRANSFORMER PRIVATE LTD.

Ph. - 06769 - 270658

132/33KV S/S  
KAMAKHYANAGAR  
YOC - 1999

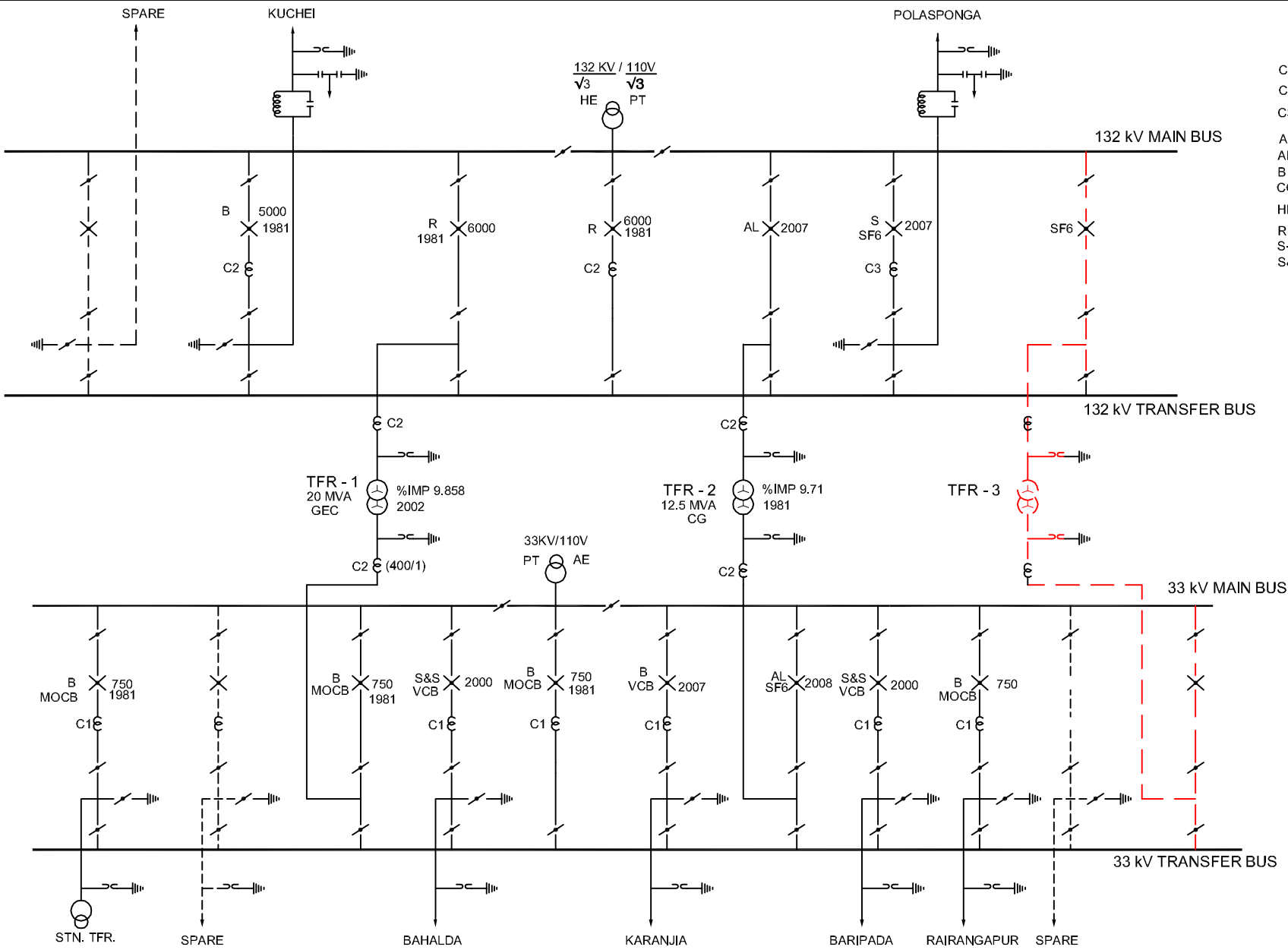


C1 - 800-400-200/1-1-1 - 1

CG - CROMTON GREAVES LTD.  
 D - DOMEN  
 GEC - GEC ALSTOM  
 S - SIEMENS

Ph : ( 06796 ) - 220083

**132/33 KV S/S  
 KARANJIA  
 YOC -2009**



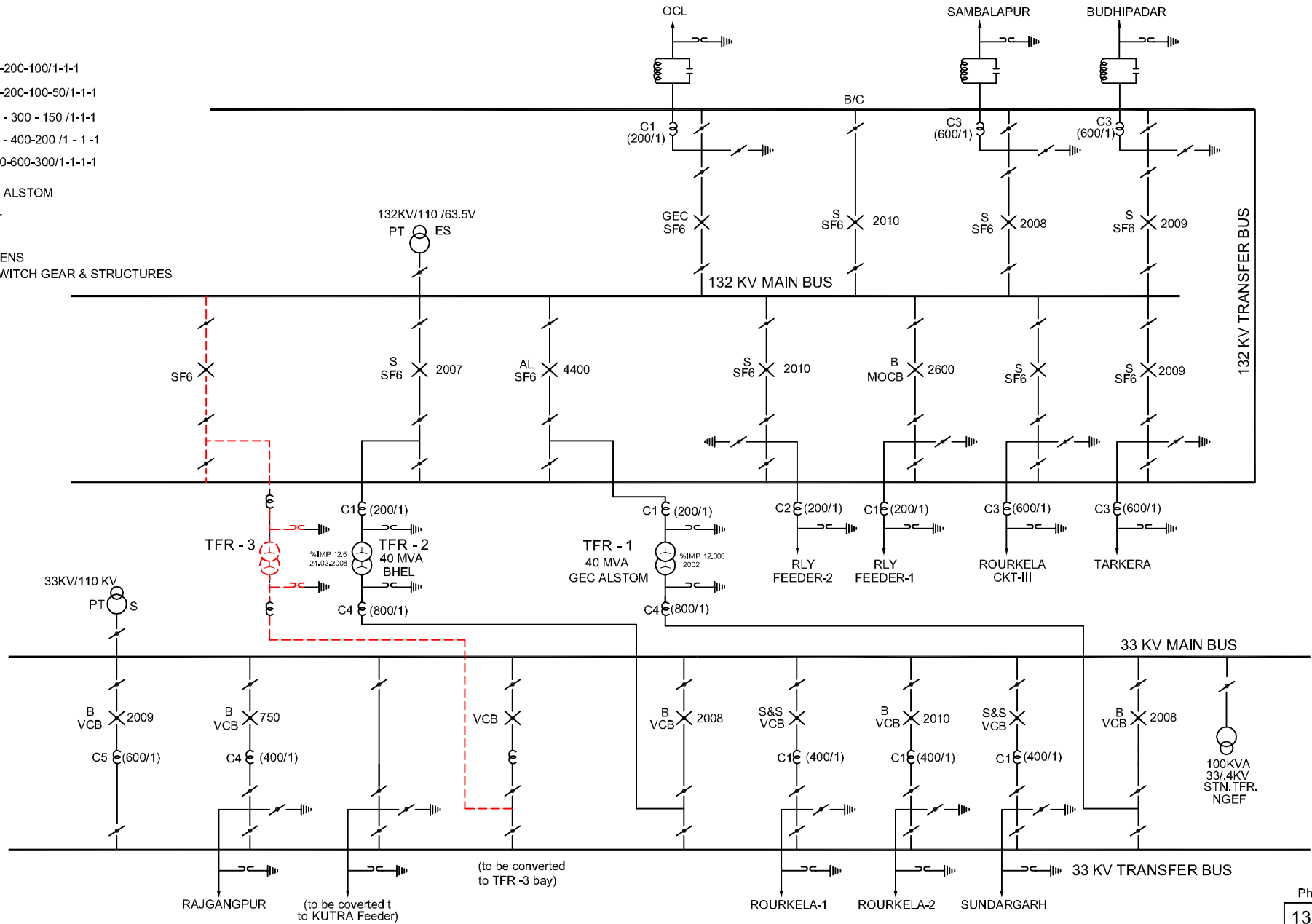
- C1 - 200 - 100 - 50/1
- C2 - 400 - 200 - 100/1
- C3 - 600 - 300 - 150 /1-1-1
- AE - AUTOMATIC ELECTRIC
- AL - ALSTOM
- B - BHEL
- CG - CROMPTON GRAVES
- HE - HEVOL TRANS & ELECTRICALS
- R - ROMANIA
- S-SIEMENS
- S&S-SWITCHGEAR & STRUCTURE

Ph : (06794) 222098

132/33KV SIS  
RAIRANGPUR  
YOC - 1981

- C1 - 400-200-100/1-1-1
- C2 - 300-200-100-50/1-1-1
- C3 - 600 - 300 - 150 /1-1-1
- C4 - 800 - 400-200 /1 - 1 - 1
- C5 - 1200-600-300/1-1-1-1

AL- GEC ALSTOM  
 B - BHEL  
 H - HEL  
 J - JOTI  
 S - SIEMENS  
 S&S - SWITCH GEAR & STRUCTURES



Ph : (06624) 220489

132/33KV S/S  
 RAJGANGPUR  
 YOC - 1973



## **ANNEXURE- II**

### **VENDOR LIST FOR 3RD PHASE 3RD TRANSFORMER BAYS (TN-27/10-11)**

- 1) **BREAKERS:** SIEMENS /ABB/ CROMPTON /BHEL/AREVA
- 2) **CT,PT&CVT: (220, 132KV)** ::AREVA /ABB/ COMPTON/ BHEL/SIEMENS  
  
**:33kV : Above** make and any OPTCL techno-commercially qualified firms  
and DRY TYPE 33KV CT OF CGL
- 3) **SURGE ARRESTOR** – CGL/OBLUM/AREVA /LAMCO
- 4) **CR PANELS::**SIEMENS/ AREVA/ABB/EASUN REYROLLE (No chinese make Relays  
accepted)
- 5) **ISOLATOR::** ABB/SIEMENS/SWITCH GEAR AND STRUCTURAL/ GR POWER/AREVA
- 6) **HARDWARE FITTINGS::** RASHTRIYA UDHYOG / ERITECH /IAC.
- 7) **CONDUCTORS::** APAR/GPIL/ HIGHTECH POWERCON / ERITECH /  
CABCON / STERLITE
- 8) **TOWER STRUCTURE:** UTKAL GALVNIZER LIMITED, BHUABANESWAR//IRVCL  
INFRASTRUCTURE & PROJECTS LTD NAGPUR//UNIQUE STRUCTURES & TOWERS LTD.  
BHILAI// TECHNO-ENGINEERING & CO. LTD., NEW-DELHI// UNISTAR GALVANIZERS &  
FABRICATORS (P) LTD. JAMSHEDPUR// NEW MODERN TECHNO MECH PVT. LTD,  
BARIPADA.
- 9) **PVC INSULATED CONTROL AND XLPE INSULATED POWER CABLE::**  
  
NICCO/GLOSTER/ CCI/ KEI/CRYSTAL/ POLY CAB/GPIL
- 10) **INSULATORS:** BHEL/ WS,/ MODERN INSULATOR/ NGK BIRLA  
**SILICON COMPOSITE INSULATORS:** GOLDSTONE/DECCAN
- 11) **EARTH WIRE:** BHARAT WIRE ROPES/ UIC WIRES/USHA MARTIN,

- 12) **CEMENT:** OPC GRADE 43: ACC/ ULTRA TECH/LAFARGE
- 13) **STEEL:** SAIL/ TISCO (TATA)/ RINL
- 14) **GI PIPE:** TATA/ JINDAL
- 15) **ALL PVC WIRES-FRLS TYPE** –ANCHOR/L&T/ FINOLEX /KDK/ INDO ASIAN/ HAVELS
- 16) **ALL SWITCHES::** ANCHOR/ABB/ CONA/HAVELS
- 17) **ALL MCB::** L&T(HAGER)/MDS/ INDO ASIAN
- 18) **ACB and MCCB-** L&T, SIEMENS/MERLIN GERIN
- 19) **ALL CLAMPS AND CONNECTORS-** HEAVY DUTY TYPE OF REPUTED MAKE TO  
BE APPROVED BY OPTCL.
- 20) **ALL CIVIL ENGINEERING MATERIALS-** REPUTED MAKE TO BE APPROVED BY  
OPTCL.
- 21) **FOUNDATION BOLTS-** REPUTED MAKE TO BE APPROVED BY OPTCL.
- 22) **GI BOLTS AND NUTS-** NEXO OR REPUTED MAKE TO BE APPROVED BY OPTCL
- 23) **LIGHTING FIXTURES:** PHILIPS/ BAJAJ/ CGL/HAVELS.
- 24) **BAY MARSELLING BOX** MAKTEL SYSTEM/SARVANA/OR ANY OTHER  
REPUTED MAKE TO BE APPROVED BY OPTCL
- 25) **A/C MACHINES::** LG/BLUE STAR/HITACHI/CARRIER/VOLTAS.

**Any other items required for completion of the project shall be considered as included & the make of such items shall be subject to approval by OPTCL and make shall be of OPTCL technically approved vendor.**

**Sd/-**

**Sr. GENERAL MANAGER(CPC)**